

DOOR STATION MOUNTING PLATE

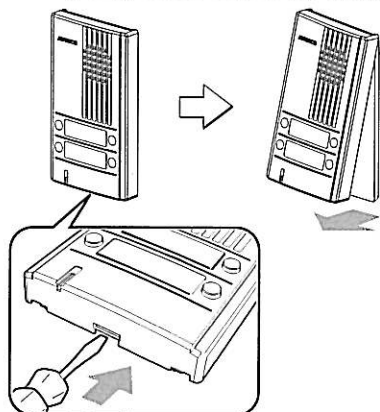
DAW-P

INSTALLATION INSTRUCTIONS

This mounting plate is for mounting the DA-1, 2, and 4DS or DG on to a single-gang box.

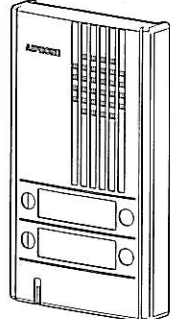
■ MOUNTING

To open, push to unlock the Front cover, and remove as shown.

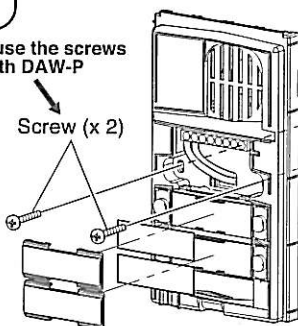


⚠ Be sure to use the screws supplied with DAW-P

Front cover panel



Screw (x 2)



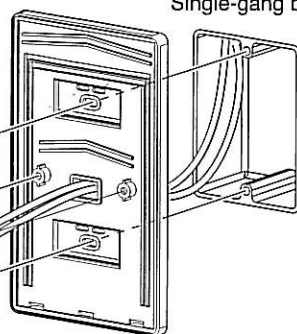
Door unit
DA-1DS, G
DA-2DS, G
DA-4DS, G

Screw (x 2)
(not supplied)

■ Package content

- Mounting plate DAW-P
- Packet of screws
- INSTALLATION INSTRUCTIONS

Single-gang box



DAW-P
Mounting Plate

1. Attach mounting plate (DAW-P) to single-gang box.
2. Mount door unit (DA-1, 2, 4DS or DG) on mounting plate.
3. Re-mount front cover panel on door unit.